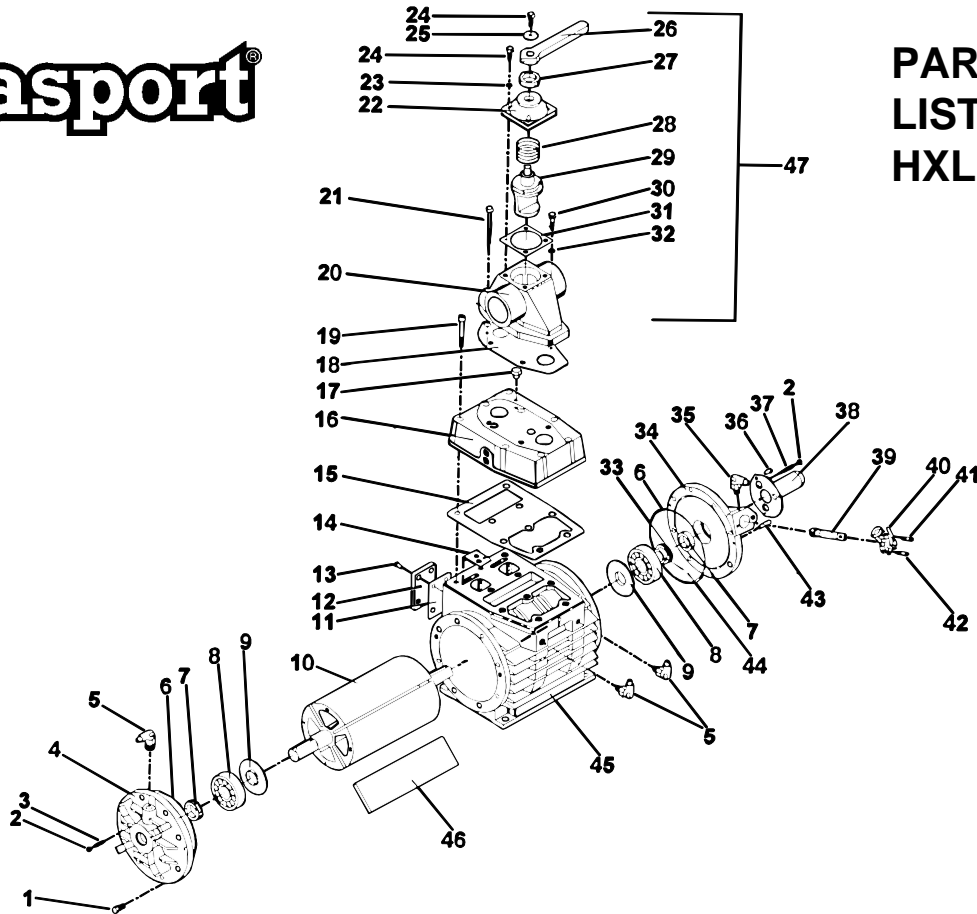


Masport®



PARTS LIST HXL15WV II

HXL15WV SERIES II LIQUID COOLED PRESSURE / VACUUM PUMP PARTS LIST (968840)

Ref	Description	Part No.	Qty.	Ref	Description	Part No.	Qty.
1	Bolt	501569	16	28	Spring	568038	1
2	Nut	504278	6	29	Spool	968804	1
3	Set Screw	504276	3	30	Bolt	501666	4
4	Endcover	968843	1	31	Gasket	568044	1
5	Swivel Elbow *	568086	3	32	Washer	500203	5
6	O-Ring	501677	2	33	Gear 2-Start	575439	1
7	Oil Seal	501015	2		6-Start	568158	1
8	Bearing	503098	2	34	Endcover 2-Start	968853	1
9	Bearing Spacer	968611	2		6-Start	968854	1
10	Rotor Assembly (Incl. 8, 9)			35	Swivel Elbow *	568085	1
	2-Start (Serial # < 90748)	975329	1	36	Bolt	501571	3
	6-Start (Serial # > 90747)	968848	1	37	Set Screw	504277	3
11	Gasket	568232	1	38	Shaft Guard	568622	1
12	Side Plate	968231	1	39	Drive Shaft Assembly	968045	1
13	Bolt	501597	4	40	Oil Pump	575437	1
14	Flap Assembly	968026	2	41	Cap Screw	504262	1
15	Gasket	568805	1	42	Cap Screw	504261	1
16	Manifold	968802	1	43	Dowel Pin	503258	4
17	Plug	27300	1	44	Set Screw	504264	1
18	Gasket	568806	1	45	Cylinder	968801	1
19	Cap Screw	501965	10	46	Vane	968811	4
20	Valve Body	968012	1	47	Integral Valve Assembly	968006	1
21	Bolt	502061	1		(Incl. 20,21,22,23,24,25,		
22	Cap	968035	1		26,27,28,29,30,31,32)		
23	Washer	501610	4	48	Endcover Shim Gasket **		
24	Bolt	501617	5		.002" Thickness	542011	***
25	Washer	501550	1		.003" Thickness	542012	***
26	Handle	968037	1	49	Oil Line (ft.) **	600293	***
27	Oil Seal	501674	1				

* NOTE: #5 - 975018 and #34 - 975019 CHECK VALVES USED ON EARLIER MODELS ONLY.

** NOT SHOWN. *** QUANTITY VARIES.