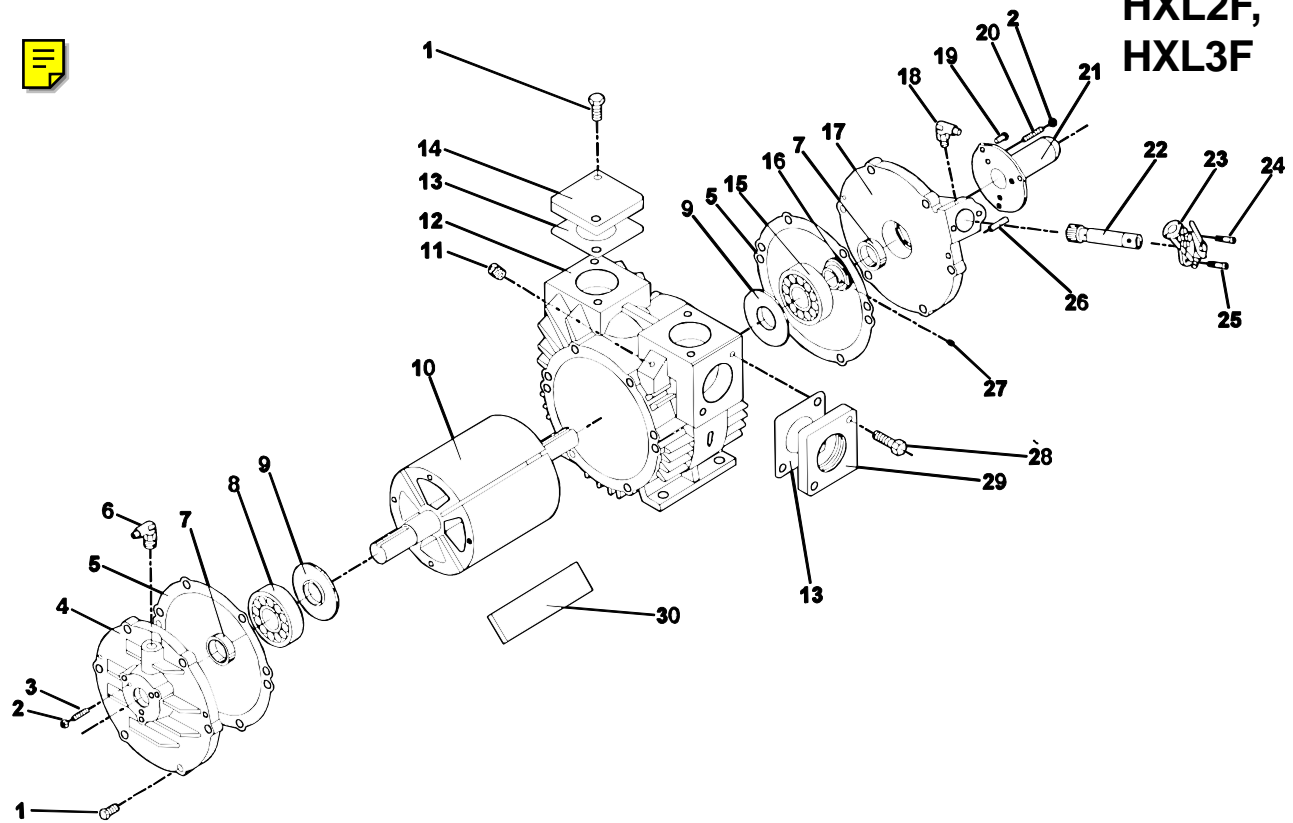




PARTS LIST HXL2F, HXL3F



HXL2F, HXL3F AIR COOLED PRESSURE / VACUUM PUMP PARTS LIST (968140, 968235)

Ref.	Description	HXL2F Part No.	HXL3F Part No.	Qty.	Ref.	Description	HXL2F Part No.	HXL3F Part No.	Qty.
1.	Bolt	501569	501569	16	15.	Bearing	501575	501575	1
2.	Nut	220221	220221	6	16.	Gear	568071	568071	1
3.	Set Screw	503225	503225	3	17.	Endcover	968243	968243	1
4.	Endcover	968242	968242	1	18.	Swivel Elbow *	568085	568085	1
5.	Endcover Shim Gasket				19.	Bolt	503227	503227	3
	.002" Thickness	575006	575006	***	20.	Set Screw	503226	503226	3
	.003" Thickness	575007	575007	***	21.	Shaft Guard	975264	975264	1
6.	Swivel Elbow *	568086	568086	1	22.	Drive Shaft Assy	968045	968045	1
7.	Oil Seal	501578	501578	2	23.	Oil Pump	575366	575366	1
8.	Bearing	501577	501577	1	24.	Cap Screw	504262	504262	1
9.	Bearing Spacer	575131	575131	2	25.	Cap Screw	504261	504261	1
10.	Rotor Assembly (Includes 8, 9, 15)	968126	975254	1	26.	Dowel Pin	575111	575111	4
11.	Plug	-----	503416	2	27.	Set Screw	504264	504264	1
12.	Cylinder	975541	975551	1	28.	Bolt	501878	501878	4
13.	Gasket	568009	568009	4	29.	Flange	968204	968204	2
14.	Blank Flange	975487	975487	2	30.	Vane	975105	975205	4
					31.	Oil Line (ft.) **	600293	600293	***

* NOTE: #6 - 975018 and #18 - 975019 CHECK VALVES USED ON EARLIER MODELS ONLY.

** NOT SHOWN.

*** QUANTITY VARIES.